



Sealtite NMUA grey:
All-plastic, medium mechanical strength, flexible, UL & CSA approved (type B).

The NMUA is the universal applicable all plastic Sealtite conduit. The lead-free PVC cover is perfect for applications where no high demands or extreme circumstances will influence the conduit. For this reason type NMUA is used in the machine and apparatus industry, train-warning-systems, and the food industry. Type NMUA is particularly used where an UL/CSA approval is demanded.

Material & Construction:

Construction: Thick smooth thermoplastic (PVC compound) core reinforced with PVC spiral.

Cover specifications: PVC, smoothbore in- and outside, with PVC spiral reinforced, lead-free according to RoHS, sunlight and UV resistant, suitable for outside and burial installation.

Special approvals: UL- 1660 type B (file # E 211327) and

CSA C22.2 (file # 20817)

Temperature range: -20 °C till +80 °C, intermittent up to +100 °C. For CSA -18 °C till +75 °C.

Colour: Grey.

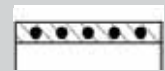
Classification according NEN-EN-IEC 61386:

Compression resistance: Class 2, Light (320 N).

Impact resistance: Class 3, Medium (2 J).

Tensile strength: Class 4, Heavy (1000 N).

Protection class: IP 67 (dust-proof, water-tight).



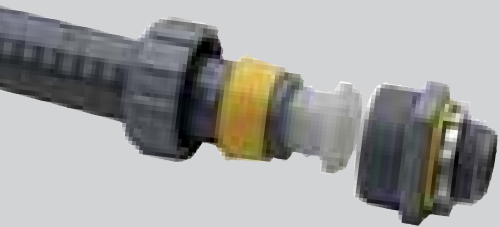
Spiral reinforced PVC

| Sealtite | Diameter | | Bending radius | | Standard carton | | Small carton | | Reels | | Weight (Kg/m) |
|----------|-------------|-------------|----------------|-------------|-----------------|-----------|--------------|-------|-------------|-------|---------------|
| | Size (Inch) | Inside (mm) | Outside (mm) | Static (mm) | Dynamic (mm) | Metre | Article No. | Metre | Article No. | Metre | |
| | | | | | | Grey | | Grey | | Grey | |
| 3/8" | 12,6 | 17,8 | 70 | 100 | 30 | 300.012.0 | - | - | - | - | - |
| 1/2" | 16,0 | 21,1 | 100 | 135 | 30 | 300.016.0 | - | - | - | - | - |
| 3/4" | 21,1 | 26,4 | 130 | 175 | 30 | 300.020.0 | - | - | - | - | - |
| 1" | 26,8 | 33,1 | 180 | 220 | 30 | 300.026.0 | - | - | - | - | - |
| 1.1/4" | 35,4 | 41,8 | 225 | 270 | 15 | 300.035.0 | - | - | - | - | - |
| 1.1/2" | 40,3 | 47,8 | 255 | 320 | 15 | 300.040.0 | - | - | - | - | - |
| 2" | 51,6 | 59,9 | 310 | 400 | 15 | 300.050.0 | - | - | - | - | - |

The fittings for Sealtite NMUA are outlined on pages 8-08 till 8-10.



| Size Sealtite | Inch | - | - | 3/8" | 1/2" | 3/4" | 1" | 1 1/4" | 1 1/2" | 2" | - | - | - |
|---------------|------|---|---|-----------|------|------|-----|--------|--------|-----|---|---|---|
| Fittings | ISO | - | - | M16 - M20 | M20 | M25 | M32 | M40 | M50 | M63 | - | - | - |
| | PG | - | - | 11 - 13,5 | 16 | 21 | 29 | 36 | 42 | 48 | - | - | - |
| | NPT | - | - | 1/2" | 1/2" | 3/4" | 1" | 1 1/4" | 1 1/2" | 2" | - | - | - |



Anamet plastic fittings for Anaconda Sealtite NMUA / NMSF.



These plastic Anamet fittings are specially made for the combination with Anaconda Sealtite NMUA/NMSF. This fitting offers liquid-tightness in combination with the UL & CSA approvals which makes them also suitable for export projects outside Europe.

Material & Construction:

Construction: Plastic fitting, consisting of 4 parts (counter nut, clamping ring, ferrule and body).

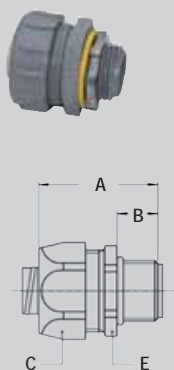
Material: Produced from UV rated plastic.

Temperature: -20 °C till +80 °C continuous.

Protection class: IP 67 (dust-proof, water-tight).

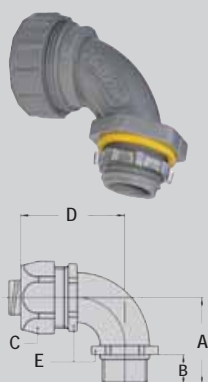
Colour: Grey.

NPT straight fitting, male, plastic (including NPT lock nut).



| Thread | NMUA Size (inch) | Min. Internal Bore (mm) | Dimensions in mm | | | | | Standard Package | Article Number | Weight (Kg/100) |
|--------|---------------------|----------------------------|------------------|---|---|---|---|---------------------|-------------------|--------------------|
| | | | A | B | C | D | E | | | |
| 1/2" | 3/8" | - | - | - | - | - | - | 25 | 300.312.0 | - |
| 1/2" | 1/2" | - | - | - | - | - | - | 25 | 300.316.0 | - |
| 3/4" | 3/4" | - | - | - | - | - | - | 10 | 300.320.0 | - |
| 1" | 1" | - | - | - | - | - | - | 5 | 300.326.0 | - |
| 1.1/4" | 1.1/4" | - | - | - | - | - | - | 5 | 300.335.0 | - |
| 1.1/2" | 1.1/2" | - | - | - | - | - | - | 2 | 300.340.0 | - |
| 2" | 2" | - | - | - | - | - | - | 2 | 300.350.0 | - |

NPT 90° fitting, male, plastic (including NPT lock nut).



| Thread | NMUA Size (inch) | Min. Internal Bore (mm) | Dimensions in mm | | | | | Standard Package | Article Number | Weight (Kg/100) |
|--------|---------------------|----------------------------|------------------|---|---|---|---|---------------------|-------------------|--------------------|
| | | | A | B | C | D | E | | | |
| 1/2" | 3/8" | - | - | - | - | - | - | 10 | 300.412.0 | - |
| 1/2" | 1/2" | - | - | - | - | - | - | 10 | 300.416.0 | - |
| 3/4" | 3/4" | - | - | - | - | - | - | 10 | 300.420.0 | - |
| 1" | 1" | - | - | - | - | - | - | 5 | 300.426.0 | - |
| 1.1/4" | 1.1/4" | - | - | - | - | - | - | 5 | 300.435.0 | - |
| 1.1/2" | 1.1/2" | - | - | - | - | - | - | 2 | 300.440.0 | - |
| 2" | 2" | - | - | - | - | - | - | 2 | 300.450.0 | - |

**ANAMET
ALL-PLASTIC
CONDUITS**

**LIQUID-TIGHT
FITTINGS FOR
NMUA / NMSF
IP 67**



Anamet plastic fittings for Anaconda Sealrite NMUA / NMSF.

The Polyamide Anamet fittings are an economical solution for areas where a lower liquid-tightness is possible and where no UL/CSA approvals are required.



Material & Construction:

Construction: Polyamide fitting, consisting of 3 parts (counter nut, clamping ring and body).

Material: Counter nut, clamping ring and body are Polyamide PA6.

Temperature: -20 °C till +80 °C continuous.

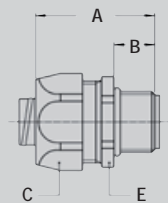
Protection class: IP 54.

Colour: Grey.

ANAMET ALL-PLASTIC CONDUITS

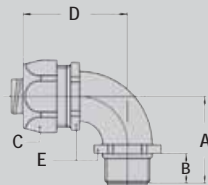
LIQUID-TIGHT FITTINGS FOR NMUA / NMSF IP 54

ISO straight fitting, male, Polyamide PA6.



| Thread | NMSF Size (inch) | Min. Internal Bore (mm) | Dimensions in mm | | | | | Standard Package | Article Number | Weight (Kg/100) |
|-----------|---------------------|----------------------------|------------------|---|---|---|---|---------------------|-------------------|--------------------|
| | | | A | B | C | D | E | | | |
| M16 x 1,5 | 3/8" | - | - | - | - | - | - | 25 | 300.116.0 | - |
| M20 x 1,5 | 1/2" | - | - | - | - | - | - | 25 | 300.120.0 | - |
| M25 x 1,5 | 3/4" | - | - | - | - | - | - | 25 | 300.125.0 | - |
| M32 x 1,5 | 1" | - | - | - | - | - | - | 5 | 300.132.0 | - |
| M40 x 1,5 | 1.1/4" | - | - | - | - | - | - | 5 | 300.140.0 | - |

ISO 90° fitting, male, Polyamide PA6.



| Thread | NMSF Size (inch) | Min. Internal Bore (mm) | Dimensions in mm | | | | | Standard Package | Article Number | Weight (Kg/100) |
|-----------|---------------------|----------------------------|------------------|---|---|---|---|---------------------|-------------------|--------------------|
| | | | A | B | C | D | E | | | |
| M20 x 1,5 | 1/2" | - | - | - | - | - | - | 25 | 300.920.0 | - |
| M25 x 1,5 | 3/4" | - | - | - | - | - | - | 25 | 300.925.0 | - |
| M32 x 1,5 | 1" | - | - | - | - | - | - | 5 | 300.932.0 | - |



Anaconda nickel plated brass fittings for NMUA / NMSF.

The nickel plated brass Anaconda fittings can also be used with Anaconda Seallite NMUA and NMSF. This Anaconda fitting is the most used universal fitting and offers great corrosion protection in combination with a nice appearance. They are also available in stainless steel.

Construction: Nickel plated brass fitting, consisting of 4 parts (counter nut, clamping ring, ferrule and body).

Material: Counter nut, body and ferrule are nickel plated

brass with exception of size 3/8" till 1" where the ferrule is from galvanised steel. Clamping ring and inserts are made from PA6 (red for ISO metric, blue for Pg and white for NPT).

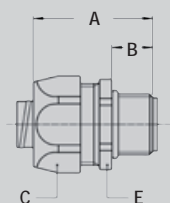
Temperature: -45 °C till +105 °C continuous (cable-hose-fittings are -40 °C till +100 °C).

Protection class: IP 67 (dust-proof, water-tight), with cable-hose fittings an IP 68 rate on the switchbox can be obtained.

Colour: Metal.



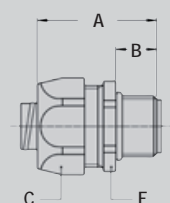
ISO straight fitting, male, nickel plated brass.



| Thread ISO | Seallite Size (inch) | Min. Internal Bore (mm) | Dimensions in mm | | | | | Standard Package | Article Number | Weight (Kg/100) |
|---------------|-------------------------|----------------------------|------------------|----|----|---|----|---------------------|-------------------|--------------------|
| | | | A | B | C | D | E | | | |
| M16 x 1,5 | 3/8" | 10,2 | 35 | 12 | 26 | - | 24 | 50 | 812.016.1 | 4,8 |
| M20 x 1,5 | 3/8" | 10,2 | 36 | 13 | 26 | - | 24 | 50 | 812.017.1 | 5,1 |
| M20 x 1,5 | 1/2" | 13,9 | 37 | 13 | 29 | - | 27 | 50 | 812.020.1 | 5,9 |
| M25 x 1,5 | 3/4" | 18,5 | 40 | 15 | 35 | - | 33 | 25 | 812.025.1 | 7,9 |
| M32 x 1,5 | 1" | 23,8 | 46 | 15 | 45 | - | 43 | 10 | 812.032.1 | 17,5 |
| M40 x 1,5 | 1.1/4" | 31,8 | 52 | 16 | 54 | - | 52 | 5 | 812.040.1 | 27,9 |
| M50 x 1,5 | 1.1/2" | 36,8 | 56 | 18 | 63 | - | 60 | 5 | 812.050.1 | 42,3 |
| M63 x 1,5 | 2" | 47,8 | 66 | 20 | 77 | - | 74 | 4 | 812.063.1 | 73,5 |



Pg straight fitting, male, nickel plated brass.



| Thread Pg | Seallite Size (inch) | Min. Internal Bore (mm) | Dimensions in mm | | | | | Standard Package | Article Number | Weight (Kg/100) |
|--------------|-------------------------|----------------------------|------------------|----|----|---|----|---------------------|-------------------|--------------------|
| | | | A | B | C | D | E | | | |
| Pg 9 | 3/8" | 10,2 | 35 | 12 | 26 | - | 24 | 50 | 810.010.1 | 4,8 |
| Pg 11 | 3/8" | 10,2 | 35 | 12 | 26 | - | 24 | 50 | 810.011.1 | 5,6 |
| Pg 13,5 | 3/8" | 10,2 | 35 | 12 | 26 | - | 24 | 50 | 810.013.1 | 5,6 |
| Pg 16 | 1/2" | 13,9 | 37 | 13 | 29 | - | 27 | 50 | 810.016.1 | 6,3 |
| Pg 21 | 3/4" | 18,5 | 40 | 15 | 35 | - | 33 | 25 | 810.021.1 | 8,4 |
| Pg 29 | 1" | 23,8 | 46 | 15 | 45 | - | 43 | 10 | 810.029.1 | 25,0 |
| Pg 36 | 1.1/4" | 31,8 | 52 | 16 | 54 | - | 52 | 5 | 810.036.1 | 34,6 |
| Pg 42 | 1.1/2" | 36,8 | 56 | 18 | 63 | - | 60 | 5 | 810.042.1 | 47,2 |
| Pg 48 | 2" | 47,8 | 66 | 20 | 77 | - | 74 | 4 | 810.048.1 | 72,0 |