



Multitite FCD grey:
Light and flexible.

Type FCD is, among others, being used in the building-industry, connection of control panels and protection against rodents. FCD is applied for quick and easy mounting and a light to medium mechanical protection.

Material & Construction:

Construction: Galvanised steel core, square-locked with thin wall convoluted thermoplastic (PVC compound) cover. Structural shape according to DIN 49012 (Type H).

Cover specifications: PVC, lead-free according to RoHS.

Temperature: -20 °C to +80 °C, intermittent up to +90°C.

Colour: Grey (black is also available).

Classification according NEN-EN-IEC 61386:

Compression resistance: Class 3, Medium (750 N).

Impact resistance: Class 3, Medium (2 J).

Tensile strength: Class 3, Medium (500 N).

Protection class: IP 67 (dust-proof, water-tight).



Square locked

**ANAMET
MULTITITE**

**CONDUIT
TYPE FCD
GREY**

FCD	Diametre		Bending radius		Standard carton		Small carton		Reels		Weight (Kg/m)
	Size	Inside	Outside	Static	Dynamic	Metre	Article No.	Metre	Article No.	Metre	
DN	(mm)	(mm)	(mm)	(mm)		Grey		Grey		Grey	
8	7,0	10,0	30	40	50	361.008.5	-	-	-	-	0,08
12	10,0	14,0	42	55	50	361.012.5	-	-	-	-	0,14
16	13,0	17,0	51	70	50	361.016.5	10	361.016.1	-	-	0,17
18	15,0	19,0	57	85	50	361.018.5	10	361.018.1	-	-	0,19
20	17,0	21,0	63	100	50	361.020.5	10	361.020.1	-	-	0,23
25	22,0	27,0	81	120	50	361.025.5	10	361.025.1	-	-	0,38
32	29,0	36,0	108	150	25	361.032.2	10	361.032.1	-	-	0,53
40	38,0	45,0	135	200	25	361.040.2	10	361.040.1	-	-	0,71
50	49,0	56,0	168	260	25	361.050.2	10	361.050.1	-	-	1,08

The fittings for Multitite FCD are outlined on pages 2-04 and 2-05.



Size Multitite	DN	8	12	16	18	20	25	32	40	50	-	-	-
Fittings	ISO	M10	M12	M16	M20	M20	M25	M32	M40	M50	-	-	-
	PG	7	9	11	13,5	16	21	29	36	48	-	-	-
	NPT	-	-	-	-	-	-	-	-	-	-	-	-

ANAMET MULTITITE

CONDUIT TYPE FCD BLACK



Multitite FCD black: Light and flexible.

Type FCD is used in the building-industry, connection of control panels and offers protection against rodents. FCD is applied for quick and easy mounting and a light to medium mechanical protection.

Material & Construction:

Construction: Galvanised steel core, square-locked with thin wall convoluted thermoplastic (PVC compound) cover. Structural shape according to DIN 49012 (Type H).

Cover specifications: PVC, lead-free according to RoHS, sunlight and UV resistant.

Temperature: -20 °C to +80 °C, intermittent up to +90 °C.
Colour: Black (grey is also available).



Classification according NEN-EN-IEC 61386:

Compression resistance: Class 3, Medium (750 N).

Impact resistance: Class 3, Medium (2 J).

Tensile strength: Class 3, Medium (500 N).

Protection class: IP 67 (dust-proof, water-tight).



Square locked

FCD	Diametre		Bending radius		Standard carton		Small carton		Reels		Weight
Size	Inside	Outside	Static	Dynamic	Metre	Article No.	Metre	Article No.	Metre	Article No.	(Kg/m)
DN	(mm)	(mm)	(mm)	(mm)		Black		Black		Black	
8	7,0	10,0	30	40	50	360.008.5	-	-	-	-	0,08
12	10,0	14,0	42	55	50	360.012.5	-	-	-	-	0,14
16	13,0	17,0	51	70	50	360.016.5	10	360.016.1	-	-	0,17
18	15,0	19,0	57	85	50	360.018.5	10	360.018.1	-	-	0,19
20	17,0	21,0	63	100	50	360.020.5	10	360.020.1	-	-	0,23
25	22,0	27,0	81	120	50	360.025.5	10	360.025.1	-	-	0,38
32	29,0	36,0	108	150	25	360.032.2	10	360.032.1	-	-	0,53
40	38,0	45,0	135	200	25	360.040.2	10	360.040.1	-	-	0,71
50	49,0	56,0	168	260	25	360.050.2	10	360.050.1	-	-	1,08

The fittings for Multitite FCD are outlined on pages 2-04 and 2-05.



Size Multitite	DN	8	12	16	18	20	25	32	40	50	-	-	-
Fittings	ISO	M10	M12	M16	M20	M20	M25	M32	M40	M50	-	-	-
	PG	7	9	11	13,5	16	21	29	36	48	-	-	-
	NPT	-	-	-	-	-	-	-	-	-	-	-	-



Anamet nickel plated brass fittings for Multitite FCD.

These nickel plated brass Anamet fittings are standard fittings which can be used with Anamet Multitite type FCD. The 2-piece Anamet fittings are universal fittings and offer great corrosion protection in combination with a slim appearance.

Material & Construction:

Construction: Nickel plated brass fitting, consisting of 2 parts (body and cap).

Material: Body and cap are nickel plated brass.

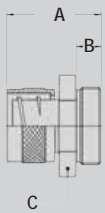
Temperature: -55 °C till +260 °C continuous.

Protection class: IP 54.

Colour: Metal.

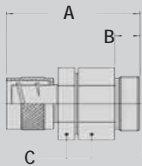
**ANAMET
MULTITITE**

ISO straight fitting, fixed, male, nickel plated brass.



Thread ISO	FCD Size (mm)	Min. Internal Bore (mm)	Dimensions in mm					Standard Package	Article Number	Weight (Kg/100)
			A	B	C	D	E			
M10 x 1,0	8	5,0	26	10	14	-	-	50	260.110.0	-
M12 x 1,5	12	8,0	27	10	18	-	-	50	260.112.0	-
M16 x 1,5	16	10,5	28	10	21	-	-	50	260.116.0	-
M20 x 1,5	18	12,5	30	10	24	-	-	50	260.118.0	-
M20 x 1,5	20	14,0	31	10	24	-	-	50	260.120.0	-
M25 x 1,5	25	17,5	36	13	30	-	-	25	260.125.0	-
M32 x 1,5	32	24,5	39	13	41	-	-	25	260.132.0	-
M40 x 1,5	40	33,5	43	15	50	-	-	10	260.140.0	-
M50 x 1,5	50	44,0	47	15	65	-	-	4	260.150.0	-

ISO straight fitting, swivel, male, nickel plated brass.



Thread ISO	FCD Size (mm)	Min. Internal Bore (mm)	Dimensions in mm					Standard Package	Article Number	Weight (Kg/100)
			A	B	C	D	E			
M10 x 1,0	8	5,0	30	10	14	-	-	50	261.110.0	-
M12 x 1,5	12	6,5	31	10	18	-	-	50	261.112.0	-
M16 x 1,5	16	10,5	32	10	21	-	-	50	261.116.0	-
M20 x 1,5	18	12,5	35	10	24	-	-	50	261.118.0	-
M20 x 1,5	20	14,0	36	10	24	-	-	50	261.120.0	-
M25 x 1,5	25	17,5	41	13	30	-	-	25	261.125.0	-
M32 x 1,5	32	24,5	45	13	41	-	-	25	261.132.0	-
M40 x 1,5	40	32,0	50	15	50	-	-	10	261.140.0	-
M50 x 1,5	50	41,0	56	15	65	-	-	4	261.150.0	-

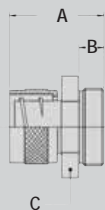
**FITTINGS FOR
MULTITITE
IP 54**

ANAMET
MULTITITE

FITTINGS FOR
MULTITITE
IP 54



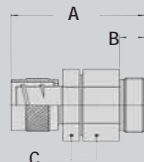
Pg straight fitting, fixed, male, nickel plated brass.



Thread Pg	FCD Size (mm)	Min. Internal Bore (mm)	Dimensions in mm					Standard Package	Article Number	Weight (Kg/100)
			A	B	C	D	E			
Pg 7	8	5,0	24	8	14	-	-	50	260.207.0	-
Pg 9	12	8,0	27	10	18	-	-	50	260.209.0	-
Pg 11	16	10,5	28	10	21	-	-	50	260.211.0	-
Pg 13,5	18	12,5	30	10	24	-	-	50	260.213.0	-
Pg 16	20	14,0	31	10	24	-	-	50	260.216.0	-
Pg 21	25	16,5	36	13	30	-	-	25	260.221.0	-
Pg 29	32	24,5	39	13	41	-	-	25	260.229.0	-
Pg 36	40	33,5	43	15	50	-	-	10	260.236.0	-
Pg 48	50	44,0	47	15	65	-	-	4	260.248.0	-



Pg straight fitting, swivel, male, nickel plated brass.



Thread Pg	FCD Size (mm)	Min. Internal Bore (mm)	Dimensions in mm					Standard Package	Article Number	Weight (Kg/100)
			A	B	C	D	E			
Pg 7	8	5,0	28	8	14	-	-	50	261.207.0	-
Pg 9	12	6,5	31	10	18	-	-	50	261.209.0	-
Pg 11	16	10,5	32	10	21	-	-	50	261.211.0	-
Pg 13,5	18	12,5	35	10	24	-	-	50	261.213.0	-
Pg 16	20	14,0	36	10	24	-	-	50	261.216.0	-
Pg 21	25	16,5	41	13	30	-	-	25	261.221.0	-
Pg 29	32	24,5	45	13	41	-	-	25	261.229.0	-
Pg 36	40	32,0	50	15	50	-	-	10	261.236.0	-
Pg 48	50	44,0	56	15	65	-	-	4	261.248.0	-



Box connector, fixed, nickel plated brass.



Thread	FCD Size (mm)	Min. Internal Bore (mm)	Dimensions in mm					Standard Package	Article Number	Weight (Kg/100)
			A	B	C	D	E			
-	8	5,0	16	-	14	-	-	50	262.208.0	-
-	12	8,0	17	-	18	-	-	50	262.212.0	-
-	16	10,5	18	-	21	-	-	50	262.216.0	-
-	18	12,5	20	-	24	-	-	50	262.218.0	-
-	20	14,0	21	-	24	-	-	50	262.220.0	-
-	25	17,5	23	-	30	-	-	25	262.225.0	-
-	32	24,5	26	-	41	-	-	25	262.232.0	-
-	40	33,5	28	-	50	-	-	10	262.240.0	-



Ferrule, brass.



Thread	FCD Size (mm)	Min. Internal Bore (mm)	Dimensions in mm					Standard Package	Article Number	Weight (Kg/100)
			A	B	C	D	E			
-	8	6,0	-	-	-	-	-	50	264.208.0	-
-	12	8,5	-	-	-	-	-	50	264.212.0	-
-	16	11,5	-	-	-	-	-	50	264.216.0	-
-	18	13,5	-	-	-	-	-	50	264.218.0	-
-	20	15,5	-	-	-	-	-	50	264.220.0	-
-	25	20,5	-	-	-	-	-	25	264.225.0	-
-	32	27,5	-	-	-	-	-	25	264.232.0	-
-	40	36,5	-	-	-	-	-	10	264.240.0	-
-	50	47,5	-	-	-	-	-	4	264.250.0	-